



# TESTA\_e MINI

BENCHTOP ENVIRONMENTAL  
AND TEMPERATURE TEST CHAMBERS



● ● ● ●  
aralab



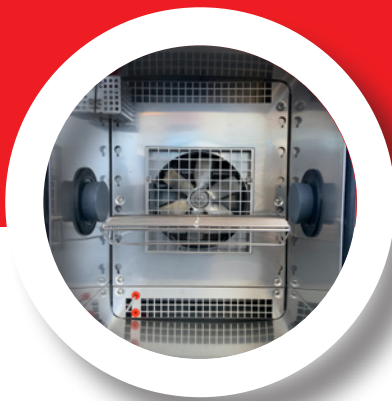


**ARALAB** is a company specialised in designing, developing, manufacturing and servicing of high quality climatic chambers and controlled environment rooms.

Since 1985 we have been perfecting ways to create and control temperature, humidity, light, air flow and many other environmental conditions.

Only the highest quality components are used to manufacture our chambers so customers can have the best equipment for their research and testing purposes.

**Control the environment, Your own climate.**



**Testa\_e temperature and humidity testing chambers offer precise and reproducible conditions for climatic and temperature testing in many industries.**

**COMMON APPLICATIONS INCLUDE:**

- ENVIRONMENTAL TESTING
- ELECTRONICS, AUTOMOTIVE, AEROSPACE,
- BUILDING MATERIALS, MILITARY EQUIPMENT, MATERIALS IN GENERAL RESEARCH
- QUALITY CONTROL
- PRODUCTION FACILITIES



Certified ISO:9001 for its Quality Management System








**KEY FEATURES**

- The most advanced technology in climate control
- Internal aerodynamic optimisation to ensure uniformity of climatic conditions
- Time saving features with easily configurable testing programs that can run, start and stop automatically
- Highly resistant stainless steel interior for maximum durability and easy cleaning
- Flexible interior with height adjustable and removable stainless steel shelves
- Nonpolluting construction and cooling system
- Compliant with international standards and requirements EN, IEC, DIN, ISO, NP and UNE








## TEMPERATURE AND HUMIDITY CONTROL RANGES

### ● ● ● ● MINI SERIES HIGH-LOW (HUMIDITY) CHAMBER

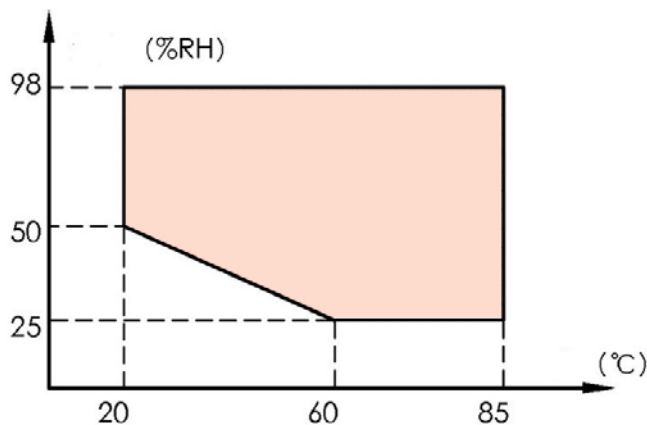
#### TESTA\_E MINI CT 30 EP30

TEMPERATURE RANGE		-30°C to +150°C
TEMPERATURE FLUCTUATION		± 1°C
TEMPERATURE DEVIATION		± 2.0°C (temperature ≤ 100°C); ± 3.0°C (temperature > 100°C)
HUMIDITY RANGE		(25 to 98)% RH (20 to 85) °C
HUMIDITY DEVIATION		± 3.0% RH (> 75% RH); ± 5.0% RH (< 75% RH)
TEMPERATURE HEAT-UP RATE		-30°C to +150°C; ≤ 35min
TEMPERATURE PULL-DOWN RATE		+20°C to -25°C; ≤ 30min

#### TESTA\_E MINI TT 30 E65

TEMPERATURE RANGE		-65°C to +150°C
TEMPERATURE FLUCTUATION		± 1°C
TEMPERATURE DEVIATION		± 2.0°C (temperature ≤ 100°C); ± 3.0°C (temperature > 100°C)
HUMIDITY RANGE		-
HUMIDITY DEVIATION		-
TEMPERATURE HEAT-UP RATE		-65°C to +150°C; ≤ 40min
TEMPERATURE PULL-DOWN RATE		+20°C to -60°C; ≤ 50min

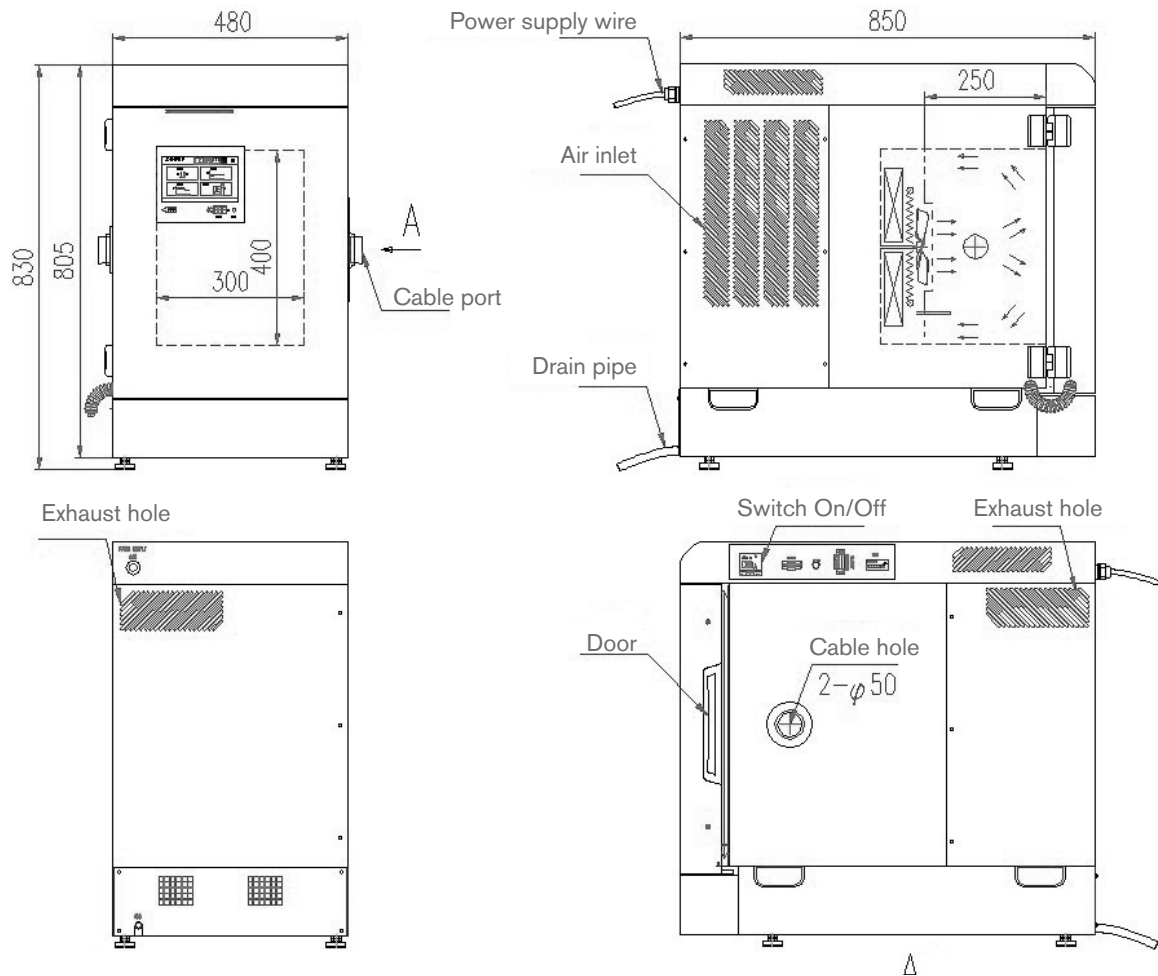
### TEMPERATURE AND HUMIDITY CHART OF TESTA\_E MINI CT 30 EP30



## DIMENSIONS AND DRAWINGS

### ● ● ● ● TESTA\_E MINI CT 30 EP30 / TESTA\_E MINI TT 30 E65

EXTERNAL DIMENSIONS (HxWxD) (mm)		805 x 480 x 850
INTERNAL DIMENSIONS (HxWxD) (mm)		400 x 300 x 250



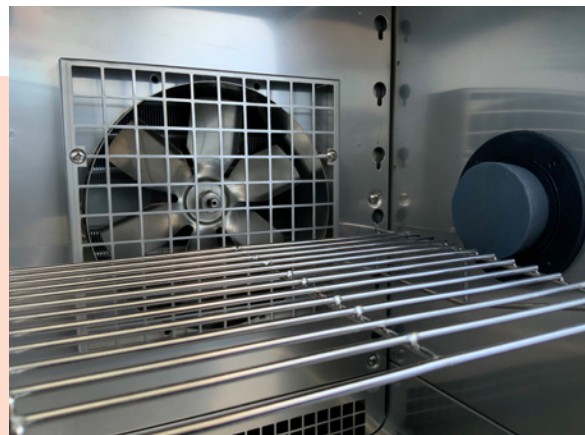
## INSTALLATION REQUIREMENTS

<b>POWER SUPPLY</b>	<ul style="list-style-type: none"> <li>AC220V/50Hz single-phase + protective grounding wire</li> <li>AC(220±22)V</li> <li>(50±0.5)Hz</li> <li>The earth resistance of protective grounding wire is less than 4Ω;</li> <li>Users are required to provide air or power switches with appropriate capacity for equipment at the installation</li> </ul>
<b>POWER SUPPLY CAPACITY</b>	<ul style="list-style-type: none"> <li>2.3kW</li> </ul>
<b>MAXIMUM CURRENT</b>	<ul style="list-style-type: none"> <li>12 A</li> </ul>
<b>WATER FOR HUMIDITY GENERATOR (TESTA_E MINI CT 30 EP30 MODEL ONLY)</b>	<ul style="list-style-type: none"> <li>Flow rate: ≥200kg/h</li> <li>Water pressure: 0.1MPa ~ 0.25Mpa</li> <li>The water filter system is provided with a pair of DN15 screwed joints.</li> </ul>

## EQUIPMENT DESCRIPTION

### ● ● ● ● CONSTRUCTION

<b>INSULATION ENCLOSING STRUCTURE</b>	<ul style="list-style-type: none"> <li>• Outer wall: two-sided galvanized steel sheet with plastic-sprayed surface</li> <li>• Inner wall: SUS304 para AISI 304</li> <li>• Thermal insulating material for chamber body: polyurethane foam + glass wool</li> <li>• Thermal insulating material for door: glass wool</li> </ul>
<b>AIR CONDITIONING CHANNEL</b>	<ul style="list-style-type: none"> <li>• Axial fan</li> <li>• Evaporator (dehumidifier), humidifier</li> <li>• Overheat protector</li> <li>• Water supply and drainage port dry boil protector</li> <li>• Heater</li> <li>• Dry-bulb temperature transducer</li> <li>• Wet-bulb temperature transducer, wet-bulb sink</li> </ul>
<b>DOOR</b>	<ul style="list-style-type: none"> <li>• Single hinged door with the hinge at the left side and knob on the right side</li> <li>• Dew-prevention device on window frame or door frame.</li> </ul>
<b>CABLE PORT</b>	<ul style="list-style-type: none"> <li>• Oblong cable port: Ø50mm x 2, each at the left and right side of the chamber.</li> </ul>
<b>Control Panel</b>	<ul style="list-style-type: none"> <li>• Controller display, Operation button, over-temperature protection setting device, USB interface</li> </ul>
<b>MACHINERY ROOM</b>	<ul style="list-style-type: none"> <li>• Refrigeration unit, water pan, drainage hole, condenser fan</li> <li>• Motor for adjusting channel</li> </ul>
<b>DISTRIBUTION CONTROL CABINET</b>	<ul style="list-style-type: none"> <li>• Leakage circuit breaker for general power supply</li> <li>• Distribution panel</li> <li>• Measuring device (ADDA)</li> <li>• Input &amp; output (I/O) board</li> <li>• Power-off protection device for distribution panel</li> <li>• Hour meter</li> <li>• RS-485 interface</li> <li>• RJ-45 Ethernet interface</li> <li>• Sample power supply control terminal</li> </ul>
<b>SAMPLE SHELF &amp; BRACKET</b>	<ul style="list-style-type: none"> <li>• Test sample shelf: 2 stainless steel shelves, load capacity (uniformly distributed): 1 kg for each.</li> </ul>



### ● ● ● ● REFRIGERATION SYSTEM

<b>WORKING MODE</b>	<ul style="list-style-type: none"> <li>Mechanical single refrigeration system (Air cooled)</li> </ul>
<b>REFRIGERATION COMPRESSOR</b>	<ul style="list-style-type: none"> <li>Hermetically sealed low-noise piston compressor</li> </ul>
<b>CONDENSER</b>	<ul style="list-style-type: none"> <li>Finned plate heat exchanger</li> </ul>
<b>EVAPORATOR</b>	<ul style="list-style-type: none"> <li>Finned plate heat exchanger (Dehumidifer)</li> </ul>
<b>THROTTLING DEVICE</b>	<ul style="list-style-type: none"> <li>Capillary &amp; Electronic expansion valve (stepping motor driver)</li> </ul>
<b>REFRIGERATING MACHINE CONTROL METHOD</b>	<ul style="list-style-type: none"> <li>The control system will automatically adjust the working condition of refrigeration machine in accordance with test conditions.</li> <li>refrigeration system Compressor return air cooling circuit</li> <li>Evaporative pressure adjustable valve</li> </ul>
<b>REFRIGERANT</b>	<ul style="list-style-type: none"> <li>R449a (ozone zero)</li> </ul>

### ● ● ● ● HUMIDIFYING SYSTEM (MODEL MW3030 ONLY)

<b>HUMIDIFIER</b>	<ul style="list-style-type: none"> <li>Basin humidifying and heating</li> <li>Stainless steel armored heater</li> <li>Control method of heater: equivalent periodic pulse-width modulation without contact, SSR (solid-state relay)</li> <li>Water level control device</li> <li>Dry boil protector for heater</li> </ul>
<b>Water supply method</b>	<ul style="list-style-type: none"> <li>Lifted by water pump</li> </ul>
<b>Position of water supply device</b>	<ul style="list-style-type: none"> <li>Drawer type water tank on the front side</li> </ul>
<b>WATER TANK VOLUME</b>	<ul style="list-style-type: none"> <li>5L</li> </ul>
<b>WATER QUALITY</b>	<ul style="list-style-type: none"> <li>Resistivity <math>\geq 500\Omega\text{m}</math></li> </ul>



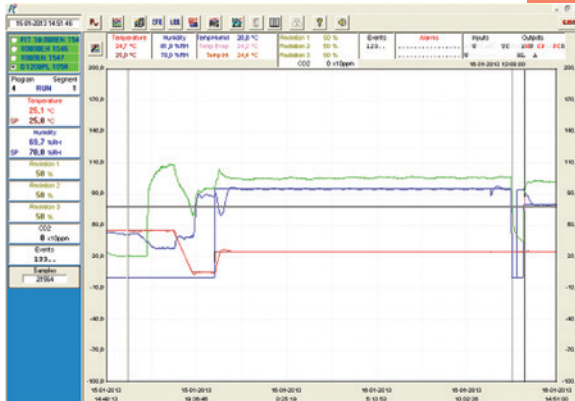
## CONTROLLER

<b>DISPLAY</b>	<ul style="list-style-type: none"> <li>7 inches, 800X480 dot matrix, TFT 64k color LCD display</li> </ul>
<b>OPERATING MODE</b>	<ul style="list-style-type: none"> <li>Program mode: fixed value mode</li> </ul>
<b>SETTING MODE</b>	<ul style="list-style-type: none"> <li>English menu; input via touch screen</li> </ul>
<b>PROGRAM CAPACITY</b>	<ul style="list-style-type: none"> <li>Editable programs</li> <li>Quantity: 20 max</li> <li>Steps: 1000 max</li> <li>Cycles: each step has a maximum of 20 cycles (each cycle step has a maximum of 99 cycles);</li> <li>Fixed: 10 programs that can be linked</li> </ul>
<b>SET RANGE</b>	<ul style="list-style-type: none"> <li>Temperature: adjust according to the temperature range of the equipment (Upper limit: +5°C; Lower limit: -5°C)</li> <li>Humidity: (0~100) %RH</li> </ul>
<b>SET &amp; DISPLAY RESOLUTION</b>	<ul style="list-style-type: none"> <li>Temperature: 0.1°C</li> <li>Time: 0.1 min</li> <li>Humidity: (0~100) %RH</li> </ul>
<b>INPUT</b>	<ul style="list-style-type: none"> <li>Thermocouple</li> <li>Platinum resistance, voltage, current, etc., if the equipment needs</li> </ul>
<b>COMMUNICATION INTERFACE</b>	<ul style="list-style-type: none"> <li>RS-485 interface</li> <li>RJ-45 Ethernet interface (IEEE802.3i/3u/3ab, 100Mbps)</li> </ul>
<b>INTERFACE CONVERTOR (OPTION)</b>	<ul style="list-style-type: none"> <li>RS-232 interface: RS-485/ RS-232 convertor</li> <li>GPIO interface (IEEE 488.2): RS-485/GPIB convertor</li> </ul>
<b>COMMUNICATION PROTOCOL</b>	<ul style="list-style-type: none"> <li>STEN Communication protocol</li> </ul>
<b>CONTROL MODE</b>	<ul style="list-style-type: none"> <li>Anti-integral saturation PID</li> <li>BTC (for temperature test equipment)</li> <li>BTHC (for temperature and humidity test equipment)</li> </ul>
<b>CURVE RECORDING FUNCTION</b>	<ul style="list-style-type: none"> <li>RAM with battery protection can save the set values, sampling values of equipment, and the time of sampling instant. The maximum recorded time is 350 days (when sampling period is 1.5min).</li> <li>The test curve data recorded by controller is: <ul style="list-style-type: none"> <li>2 channel temperature: set temperature and measured temperature</li> <li>2 channel humidity: set humidity and measured humidity.</li> </ul> </li> </ul>
<b>AFFILIATED FUNCTION</b>	<ul style="list-style-type: none"> <li>Malfunction alarm, cause and treatment indicating function; power failure protection function; highest and lowest temperature protection function;</li> <li>Calendar timing function (automatic startup and shutdown)</li> <li>Self-diagnosis function</li> </ul>



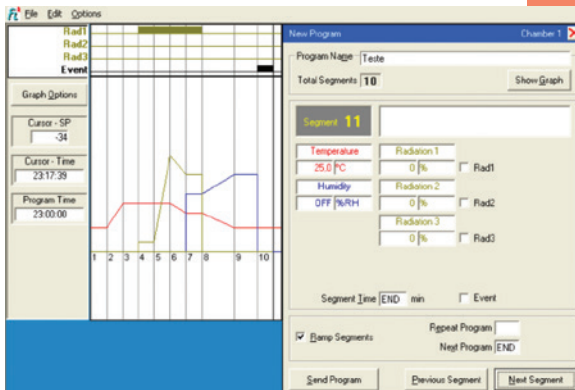
## FITOLOG SOFTWARE

The FitoLog software pack is a set of applications designed to facilitate the monitoring and programming and data from the FitoClima chambers. It consists of 3 applications: **FitoLog**, **FitoLogView** and **FitoProgram**.



### FITOLOG

Records and displays in real time all data and details related to the set-points, running variables and equipment behaviour.



### FITOPROGRAM

This application simplifies the creation of programs and its integration on the chamber ClimaPlus controller. Up to 20 programs, each with 50 segments, can be designed and linked to create detailed environmental profiles and simulations.

## ACCESSORIES

- Additional shelves
- Observation window
- Instrument vehicle/table (850mm X 400mm) with casters





Let's meet!  
aralab@aralab.pt  
www.aralab.pt  
T: +351 219 154 960



**Control the environment**  
Your own climate