

function

SCITEQ end plugs for fittings are stainless steel end plugs and cage produced for fittings to be used for internal hydrostatic pressure testing, including burst testing. The end plugs comply with standards ISO 9080, ISO 1167, ASTM D 1598, ASTM D 1599 and equivalent.

highlights

easy handling

user-friendly design

quick assembly

compact construction

perfect sealing

high quality materials

version 06/2012

features

The SCITEQ end plugs and cages are produced in stainless steel and surface treated aluminium (depending on diameter) in various dimensions from Ø16mm up to Ø250mm. These end plugs are extremely quick and simple to assemble compared to other constructions on the market. SCITEQ supplies a wide range of end plugs for various fittings, for instance V-fittings in 45 and 90 degree bends and T-fittings.



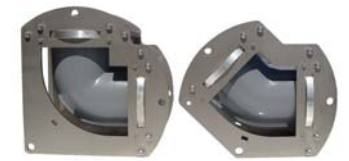
We wish to give our partners the tools to produce to the highest standard, while helping them to produce as cost-effectively as possible with Q.C. tools throughout the factory.

construction

The construction has been selected for corrosion resistance, durability and ease of operation. Larger sizes are constructed with surface-treated aluminium to ensure low weight and easy handling.

The end plug system consists of 2-3 end plugs equipped with connections and bleed valves for airing out the fitting sample, as well as a containment cage. The end plugs are mounted on the fitting and placed in the containment cage where it is fixed by means of slots and bolts. The whole procedure of preparing a pipe sample for testing is very time efficient and user-friendly.

O-rings seal off the end plugs seal. The pressure station is started while the airing-out screw is open. When the fitting sample is completely aired out, the test may commence.



90 degree and 45 degree bends



T-fitting and straight pipe

associated equipment

essential equipment

pressure stations

thermo tanks

hoses

pc-sciteq software

laboratory saw

diameter range: Ø16mm and up to Ø250mm (larger sizes on request)

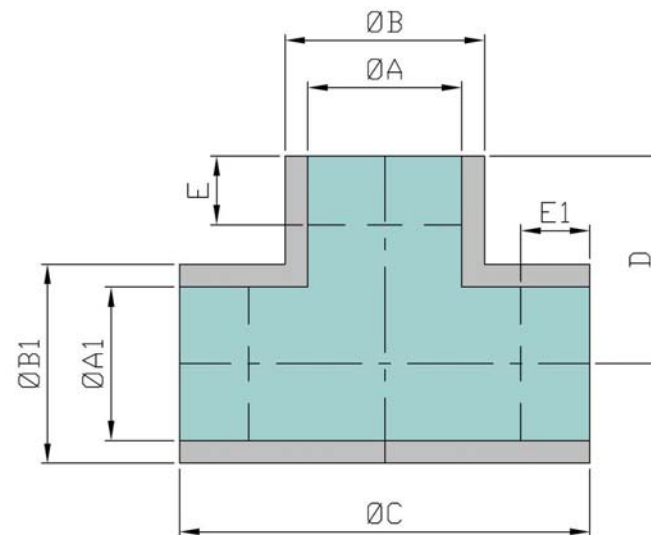
material: stainless steel (and surface treated aluminium depending on diameter)

connection: 1/4" male connection and supplied with bleed valve

max. test pressure: up to 200 bar (depending on standard, specifications and pipe sample diameter). Also suitable for burst testing.

spare parts: refurbishment possible

standards: ISO 9080, ISO 1167, ASTM D 1598, ASTM D 1599 and equivalent.



example of fitting dimensions needed for constructing end plugs and containment cage



end plugs are mounted on the plastic pipe T-fitting



the end plugs and plastic fitting are placed in the containment cage



the lid of the containment cage is ready to be fixed and pressure testing may commence

SCITEQ A/S
 Rho 3
 DK-8382 Hinnerup
 Denmark
 Tel.: +45 86 96 19 33
 Fax: +45 86 96 24 75
 www.sciteq.com
 sales(at)sciteq.com

associated | equipment ▲ | essential equipment

pressure stations

thermo tanks

hoses

pc-sciteq software

laboratory saw